



REGIONAL | SOUTHWEST



ARIZONA | NEW MEXICO | NEVADA



Navajo Tile I & II by Wilson  
PI | WL462-A & WL463-A



Papago Park, AZ & Red Mountain, AZ  
ALSS | 69464821 & 1314163286



Geo Landscape Line I & II by Barnes  
WAG | 2813350 & 2813351



Bird in Paradise Blooms & Group of Horses  
ALSS | 1755348650 & 322301693



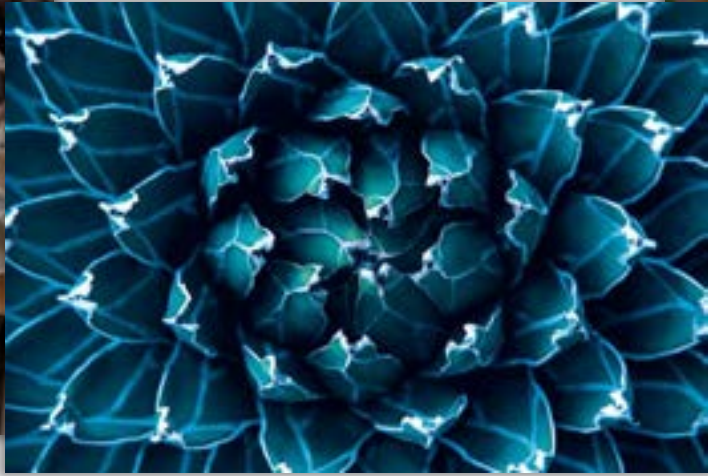
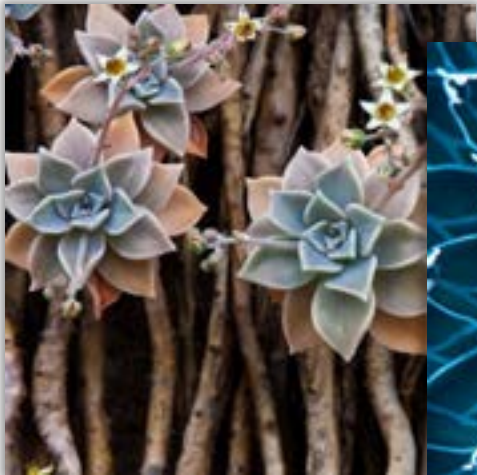
Land Meets Sea I & II Barnes  
WAG | 2719396 & 2719397



Desert Sunrise & Desert Rock Stack  
ALSS | 1781466779 & ALIS | 000057412338



Desert Haze I & II by Harper  
WAG | 2839452 & 2839453



Succulent Branch, Blue Agave, Colorful Succulents  
ALSS | 37492459, 1583405062, & 697152379



Orange Desert Flowers & Tempe Reflects  
ALIS | 000008839626 & ALSS | 2018340635



Bike on Stucco & Crescent Moon  
ALSS | 133457240 & ALSS | 129280133



Oxidized Mesa I, II, III by Lam  
WAG | 2768087, 2768088, & 2768089



Tile Mosaic & Crescent Moon  
ALSS | 1455706163 & 129280133



Saguaro and Four Peaks & Balanced  
SS | 547265233 & ALSS | 2316908899



Dreams Out West & Southern Ute by Munger  
WA | 72447-a & 72016-a





Desert Stones I & II by Popp  
WAG | 2719903 & 2719904



Vintage Mining Car & Tonopah, NV Mining Park  
ALSS | 51610006 & 1508317085



Chamisa I & II by O'Toole

WAG | 2744881 & 2744882



Reno Sparks Valley & Gold Hill, Virginia City, NV

ALSS | 1381228637 & 1127156861



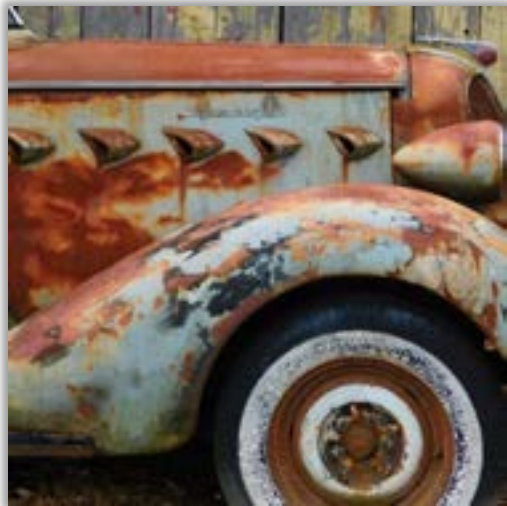
Mesa Skyline I & II by Vess  
WAG | 2661894 & 2661895



Canyon View & Crossing the River  
ALSS | 33120367 & 1242875956



Desert Song I by Dargo & Moody Desert by Leonard  
TAW | UDAR-275 & ULEO-130



Canyon View with Brittle Brush, Horseshoe on Fence, & Rusty Truck  
ALSS | 95356051, 1227938893, & 588437954



Scandi Farmhouse II & I by Gallagher  
WA | 68639-b & 68638-b



Traditional Architecture & Clay Pottery  
ALSS | 1709919 & 2897479



Desert Palette I & II by Lazar Studio  
PI | ZS011-A & ZS012-A



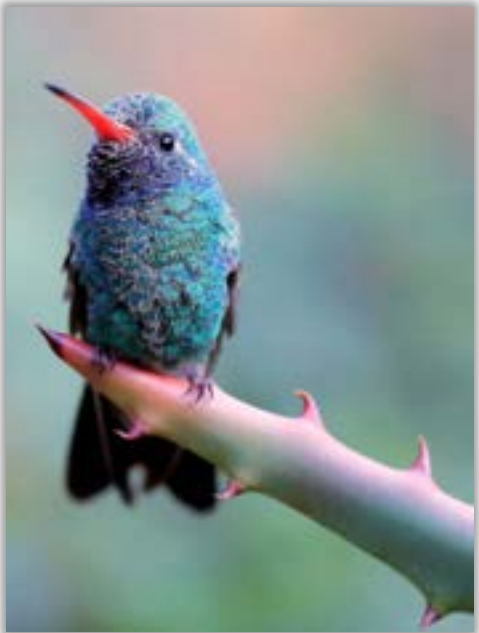
Desert Sunrise & Ear of the Wind  
ALSS | 1486148294 & 1682062804



Desert I & II by Penner  
WA | 77923-b & 77924-b



Cactus and Stucco & Wooden Wagon Wheel  
ALIS | 140271063 & 15275962



Cacti in the Sun & Broad-Billed Hummingbird  
ALIS | 496921930blue & ALSS | 1593296824



Pigment Patch I & II by Barnes  
WAG | 2844180 & 2844181





Church Rock – Gallup, NM & Winter at White Cliffs – Gallup, NM  
ALSS | 1968727786 & 1629030022



Umber Marsh I & II by Barnes  
WAG | 2810328 & 2810329



Cactus Bird & Sunrise Landscape, AZ  
ALSS | 558724372 & 694846756



Patterned Butterflies I & II by Jensen  
PI | JSN16 & JSN17



Lakeview Sunset I & II by Goldberger  
WAG | 2716135 & 2716136



Watson Lake – Prescott, AZ & Cactus Sunset  
ALSS | 46613380\_ED & 643896043



Colorful Clouds Over Desert & Blue Agave  
ALSS | 124209694 & ALSS | 781611403



Mesa Vista I & II by Vess  
WAG | 2676205 & 2676206



Flowering Sagebrush & Green Hot Air Balloon  
ALSS | 1092723545\_ED & 1513714



Virginia Truckee Railroad Car & Virginia City Mining Co, NV  
ALSS | 1501573301 & 1501573214



Cholla Cactus Landscape & Rustic Arizona Barn  
ALSS | 1026877495 & 160415267



Mars I & II by Longley  
WAG | 2801229 & 2801230



Cactus in Early Light & Grand Canyon  
ALSS | 2109577193 & 2122992014



Mendenhall & Rites of Spring by Denise  
TAW | UDEN-107 & UDEN-105



Bowen Trail – Tucson, AZ & Petroglyph at Signal Hill  
ALSS | 1873712794 & 153322307



Desert Oasis Study I & II by Warren  
WAG | 2870111 & 2870112





Terracotta Arch I, II, & III by Artic Frame Studio  
PI | AF049-A, AF050-A, AF051-A



Scenic Cliffs Along US Highway 84 & Ride at Sunrise  
ALSS | 2343573677 & 2147586285



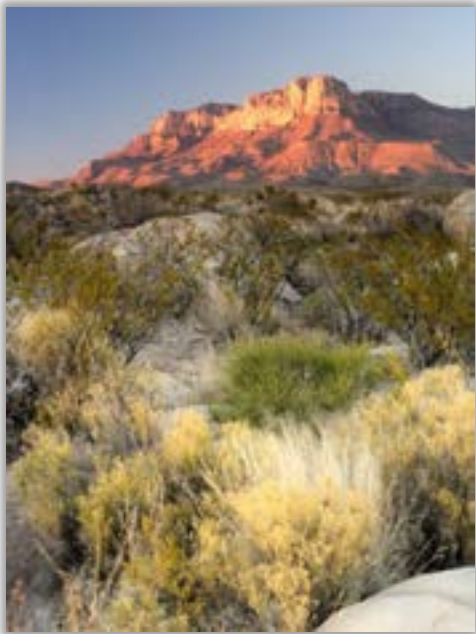
Arizona Desert I & II by Isabelle Z  
PI | EZ940-A & EZ941-A



Succulent Window Garden & Orange Window  
ALIS | 510784684 & 105756097



Desert Flower I & II by Vess  
WAG | 2888504 & 2888505



Brittle Brush in Desert, Snow in the Desert, & Desert Sagebrush  
ALIS | 173601559, 467447080, & 183834991



Santa Fe Railroad & Ranchos de Taos Valley, NM  
ALSS | 2086220890 & 1476876065



Saltbush by Michelle & Lovely Place to Be by Jardine  
TAW | MIC-081 & OJAR-3654



Barn Landscape & Petroglyph New Mexico  
ALSS | 52508635 & 1025520451



Through the Desert II, III, & IV by Haase  
WAG | 2954227, 2954228, & 2954229



Desert Glow I & II by Warren

WAG | 2740966 & 2740967



Desert Blooms & Bee Eater

ALSS | 523113391 & 703849171



Desert Dreams II, III & IV by McCavitt  
WAG | 2652142, 2652143 & 2652144



New Mexico Architecture & Painted Desert  
ALSS | 27386062 (specrop) & 77675296



High Desert I & II by Purinton  
WA | 70529-a & 70530-a



Pink Prickly Pear & Butterfly on Cactus Bloom  
ALSS | 629877161 & 1150242323





Green Cactus & Succulent Collection  
ALSS | 1477329068 & 34554649



Desert Afternoon by Becker & Winter Desert by Baker  
IC | B3954D & B3883D



Essence I & II by Watts  
PI | EW256-A & EW257-A



Woven Basket & Colorful Pots  
ALSS | 272227787 & 79191349



Chili Peppers & Stack of Hats  
ALSS | 1351231991 & 2040939809



Desert Bloom & Desert Whisper by Turner  
CAP | POD61393 & POD61394



Bison in the Field & Two Saddled Horses by Victoria  
PI | VC045-A & VC043-A



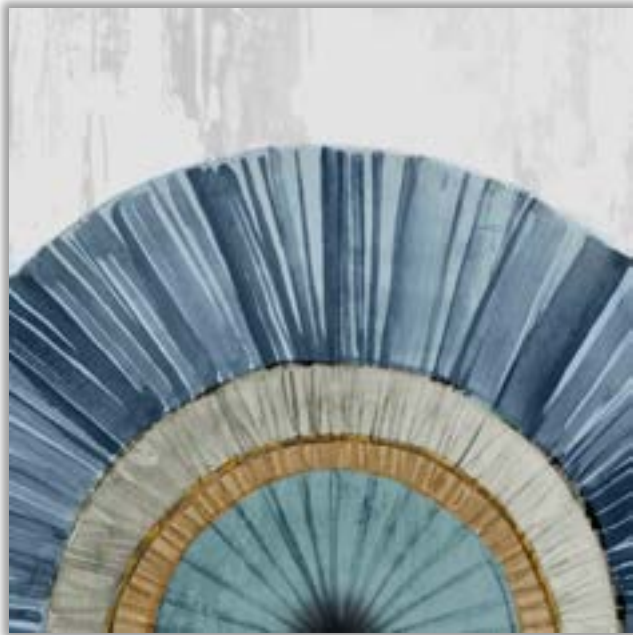
Pineaar – Arizona Sunset by 1x & Sunny Desert by Stelfox  
PI | OX474-A & NR716-A



Lake Powell National Park, AZ & Soft Blue Cactus  
ALSS | 1791159725 & 1007105962



Mosaic Mesa I & II by Vess  
WAG | 2673643 & 2673644



Arizona Fan I & II Blue Version by Isabelle Z  
PI | EZ938-C-Blue & EZ939-C-Blue



White Sands – San Andres Mountains & Magdalena Peak New Mexico  
ALSS | 263955836 & 2300165675



Eagle Nest Lake State Park & High Desert Sky by Vassileva  
ALSS | 2257541935 & WA | 49264-a



Nevada Mountain Barn & Wagon Wheel  
ALSS | 580807105 & 1694511331



Lake Tahoe Cruiser & Route 66 by Dupre  
ALSS | 472985344 & IC | D531

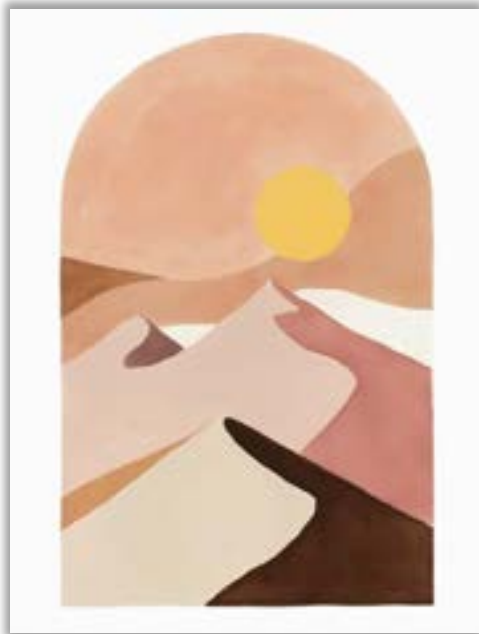
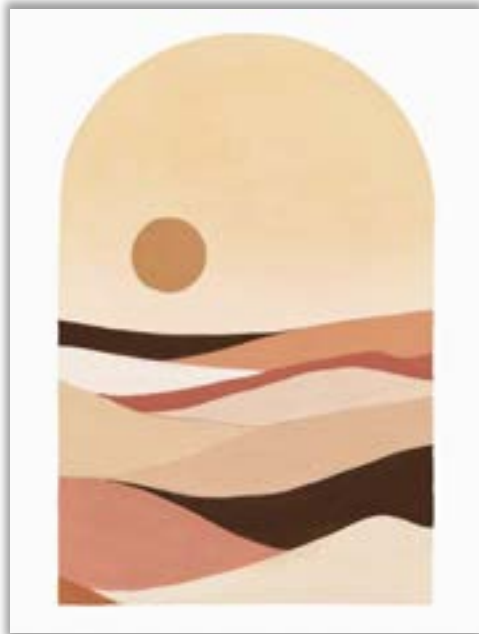


Hot Air Balloon & Great Reno Balloon Race  
ALSS | 58177054 & 91561577





Pineaar – In the Desert by 1x & Hohokam by Broadway  
PI | OX664-A & IC | B4429D



Desert Arch I & II by Isabelle Z  
PI | EZ956-A &



Desert Hills by PI Studio & Santa Fe Pottery  
PI | PI865-X & ALSS | 193390142 (specrop)



Santa Fe New Mexico & Modern Western II by Harper  
ALSS | 1481021483 & WAG | 2766616



Reno, NV – Circa 1950 & Reno Nevada Neon  
ALSS | 94605370 & 107985857\_BW



Mid Century City – Las Vegas by Circle Art Group & Las Vegas by GraphINC  
WAG | 2559045 & IC | IN30382



Group of Wild Horses & Silver Mind Camp, NV  
ALSS | 1935989371 & 1508317082



Brushed Canyons I & II by Parker  
WAG | 2810330 & 2810331



Rio Grande Gorge Bridge- Taos, NM & Desert Rockfall I by Popp  
ALSS | 1755838322 & WAG | 2761796



Antique Lizards I by Unknown & Spiny Cactus  
WAG | 2735119 & ALSS | 1219724773



Mile 52 Colorado River by Gavrilis & Sandstone Arches, NM  
IC | G2143D & ALSS | 308946095



Desert Landscape I & II by Pete  
WA | 65945-a & 65946-a



Quest for Flowers I, II, & III Pastel Version by Daguiar  
TAW | UDAG-105\_ALT\_V31, UDAG-106\_ALT\_V31, & UDAG-107\_ALT\_V31



White Sands New Mexico & Cliffs in Northern Nevada  
ALSS | 1781466740 & 2198653923

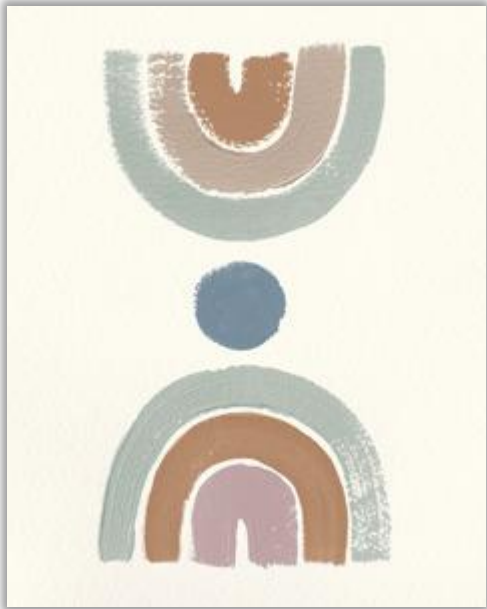


Spring Desert II by Vassileva & OJAR-3596\_ALT\_V33 by Jardine  
WA | 31690-a & TAW | OJAR-3596\_ALT\_V33



Joshua Tree Neutral I & V by Urquhart  
WA | 68488-I & 68492-I





Desert Rainbows II Mint, Desert Rainbows I, & Desert Rainbows I Blue by Hershey  
WA | 66742-b, 57560-b, & 66741-b



Wildflowers in Red Rock Canyon & Mojave Vegetation  
ALSS | 2321115865 & 186465377



Calming Nature I & II by Orlov  
PI | OR688-A & OR689-A



Leon & Mulege by Broadway  
IC | B4449D & B4450D



Layered Rock, AZ & Ghost Ranch, Abiquiu New Mexico  
ALSS | 2367626591 & 695931100



Song of Abstract Nature I & II by Orlov  
PI | OR690-A & OR691-A



Burrowing Owl, NV & Mustangs Little Washoe Lake, NV  
ALSS | 2367567033 & 1933462526



Sunset Taos, NM & Shiprock, NM  
ALSS | 1440178745 & 1752791582



A Game of Roulette & Place Your Bets  
ALSS | 121083553 & 99664547



Las Vegas Strip – 1979 & Welcome to Las Vegas  
ALSS | 1010045053 & 301796903



Decorative Burro I & II by Studio W  
WAG | 2659741 & 2659742



Buildings in Taos, NM & Santa Fe Architecture  
ALSS | 772659226 & 1514714795



Greetings from New Mexico & Greeting from Tucumcari  
WAG | 2645568 & 2645571



Window Cactus Garden & Pecos National Monument, NM  
ALSS | 421739422 & 58504982

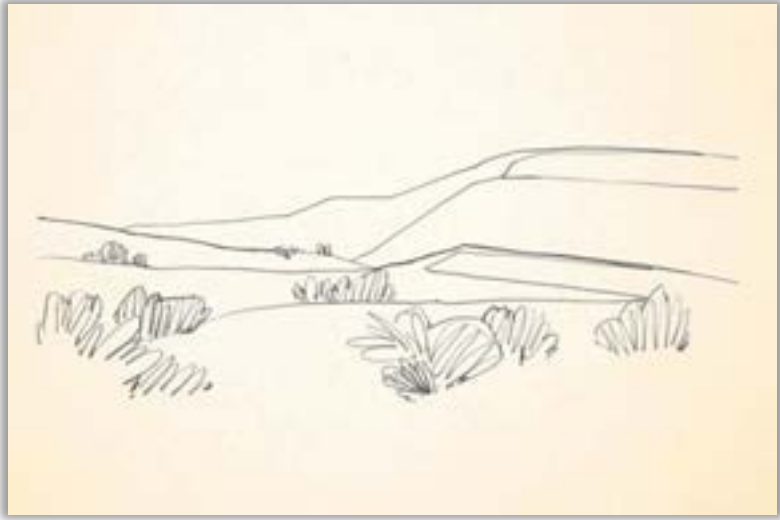


Blue Doors, NM & Traditional Architecture  
ALSS | 300529049 & 399859801



Saguaro Cactus Study I & II by Harper  
WAG | 2839350 & 2839351





Desert's Edge I & II by Caroline  
WAG | 2774349 & 2774350



Teepee in New Mexico & Cactus on Coral II by Popp  
ALSS | 412345675 & WAG | 2658696



Arizona Architecture & Southwest Still Life  
ALIS | 471015508 & 126588344



Cactus I & II by Crowell  
TAW | CRO-1175 & CRO-1183



Melted Sediment I & II by Popp  
2781768 & 2781769



Monument Valley, AZ & Rugged Landscape, AZ  
ALSS | 694846756 & 775000255



Wild Burrow & Cluster of Cacti  
ALSS | 2397593161 (specrop) & 2420539435



Red Rock Arch Valley of Fire & Tiled Staircase  
ALSS | 372489928 & 548674873



Cactus Field I & II by Isabelle Z  
PI | EZ950-A & EZ951-A



Valley of Fire National Park & Bighorn, NV  
ALSS | 541393657 & 1932698981



Cactus Garden by Wilson & Red Rock Canyon by Jardine  
PI | WL201-A & TAW |



Tucson Sunset & Grand Canyon Sunrise  
ALSS | 720033106 & 118359190



Horseshoe Canyon & Colorado River Reflections  
ALSS | 772558504 & 1281394573 (specrop)



Desert Ridge I & II by Vess  
WAG | 2827227 & 2827228



Grand Canyon Colors & Wheel on Fence  
ALIS | 155396275 & ALSS | 178507490



Flower Dance I, II, III, & IV by Wang  
WAG | 2718420, 2718421, 2718422, & 2718423





Light Through the Canyon & Flagstaff Sunset  
ALSS | 607122185 & ALIS | 496604169\_ED



Cactus Flowers & Smooth Stones  
ALSS | 2010756092 & 143210167



Basket Motif I, II, IV by Vess  
WAG | 2651107, 2651108, & 2700835



Blue Door on Stucco & Wooden Wagon Wheel  
ALSS | 25641103 & 56006995



Tapestry of Nature I, II, & III by Orlov  
PI | OR844-A, OR845-A, & OR846-A



Butterfly on Cactus & Roadside Motel  
ALSS | 1545565976 (specrop) & 142260568



Road Through Valley of Fire & Joshua Tree in Desert  
ALSS | 1466892638 & 383732083



Cut Out Abstract I, Desert Arch I by Parker, & Cut Out Abstract II by Williams  
PI | WG031-A, WAG | 2810390, & PI | WG032-A



Decorative Balloons & Fly Geyser Nevada  
ALSS | 1077818879 & 714092035



Brick Archway & Assorted Peppers  
ALIS | 144294045 & ALSS | 26846602



Seven Magic Mountains, NV & Woven Textiles  
ALSS | 1293094381 & 1284282859



Bright Paper I & II by Reeves  
PI | RF583-A & RF584-A



Prickly Pear Bunny Ear Cactus & Ghost Ranch Landscape, NM  
ALSS | 764657647 & 303456686



Contours of Nature I & II by Orlov  
PI | OR795-A & OR796-A



Squirrel at the Grand Canyon & Sunrise at Toroweap  
ALSS | 2088982162 & 572327896



Canyon View & Red Rock by Yeremyan  
IC | Y45D & Y85D





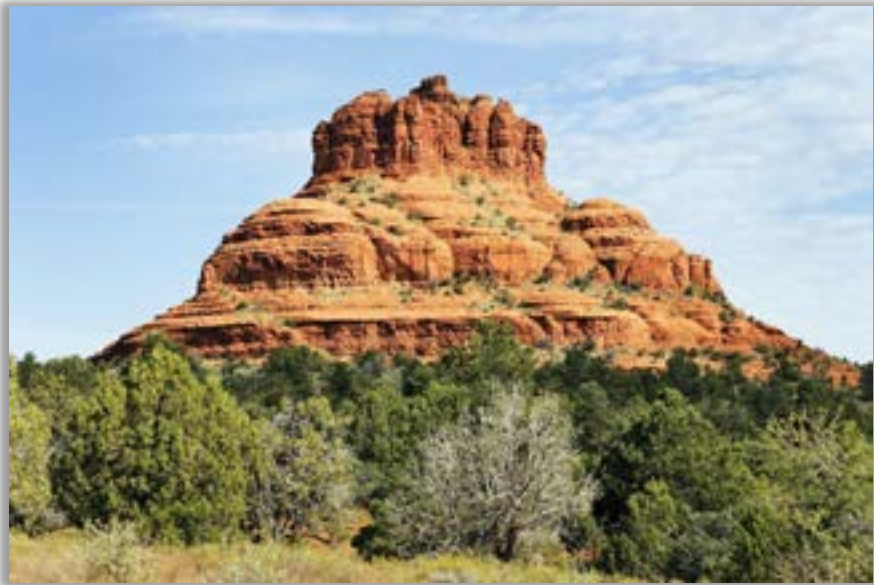
Wicker Terracotta I & II by Jacob Q  
PI | CQ161-A & CQ162-A



Pueblo Style Adobe Architecture & Cactus by Incado  
ALSS | 1653786763 & IC | IN32697



Desert Haze Abstraction I & II by Harper  
WAG | 2974123 & 2974124



Red Rock Sedona AZ & Ship Rock New Mexico  
ALSS | 117391426 & 2185071167



You Surprise Me & Note in the Sky by Vanscoy  
SEL | TR47842-PCN & TR47841-PCN



Woven Dreams I & II by Wilson  
PI | WL448-A & WL449-A



Lone Wolf & Wolf on the Prowl  
PI | KJ088-A & KJ087-A



Warm Hills I & II by Reeves  
PI | RF343-A & RF344-A



Secrete Cove – Lake Tahoe & Mt. Rose – Washoe County, NV  
ALSS | 1298966530 (B&W) & 1113571379



Mesa Horizon Strata I & II by Popp  
WAG | 2740106 & 2740107



Believe – Reno, NV & Reno Hot August Nights  
ALSS | 1801417192 & 1686511078 (specrop)



Virginia Street Bridge & Riverside View - Reno  
ALLOCC | 236589 & 236590



Serene Awakening II & I by Watts  
PI | EW360-A & EW359-A



Trees at Lake Tahoe & Trellis Bridge Over the Truckee River  
ALSS | 1153002207 & ALIS | 1147440634



Fresh Snow in Lake Tahoe & Washoe Lake, NV  
ALSS | 767268031 & 1605576025



Embellished River Canyon III & IV by Zarris  
WAG | 2728820 & 2728821