



REGIONAL | TROPICAL



FLORIDA | HAWAII



Dawning I & II by Reeves & Boardwalk Pier by Jardine  
PI | RFV07, TAW | OJAR-2908 & RFV08



Spiraling I & II by Popp  
WAG | 2827340 & 2827341





Coconut Palm & Seashell Bell  
ALSS | 1230798754 & 241214731



Florida Rocking Chairs & Garden Fountain  
SS | 1977877715 & ALSS | 24001936 (brighten)



Teal Oyster III, Purple Conch II, Lightning Whelk II, & Atlantic Cockles II by Millet  
PI | KY024-A, KY030-A, KY026-A, & KY025-A



La Spiaggia by 1x Collection  
SEL | TR47053-PCN





Beach Cruisers & Ocean Sunset  
ALSS | 1117670000 & 165546275

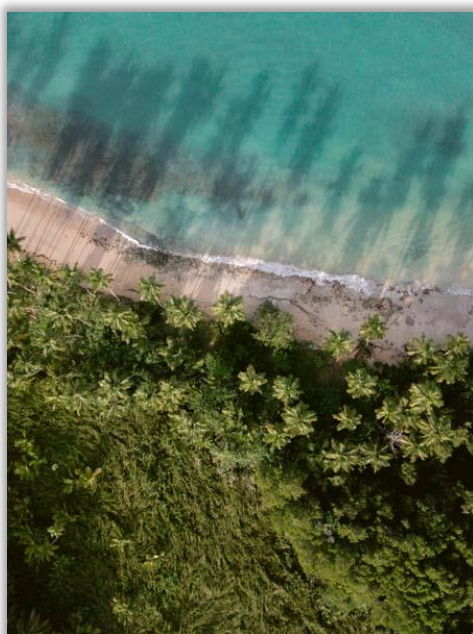


Big Hawaiian Wave & Sunset Pilings  
ALSS | 65093608 & ALIS | 73 (11) sprcp





Along the Way & Freshwater by Van Landuyt  
IC | V540D & V537D



Zwart – Waves, Palm Beach, & To the Beach by 1x  
PI | OX519-A, OX520-A, & OX518-A





Great Blue Heron & Tropic Leaves  
ALSS | 550240612 & 7293343



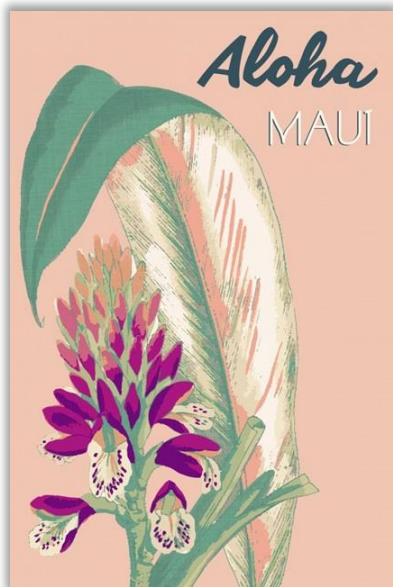
Tropic Sway II by Jensen & Low Tide 1 by Franklin  
PI | JN106-A & IC | HAZ17



# Regional | Tropical

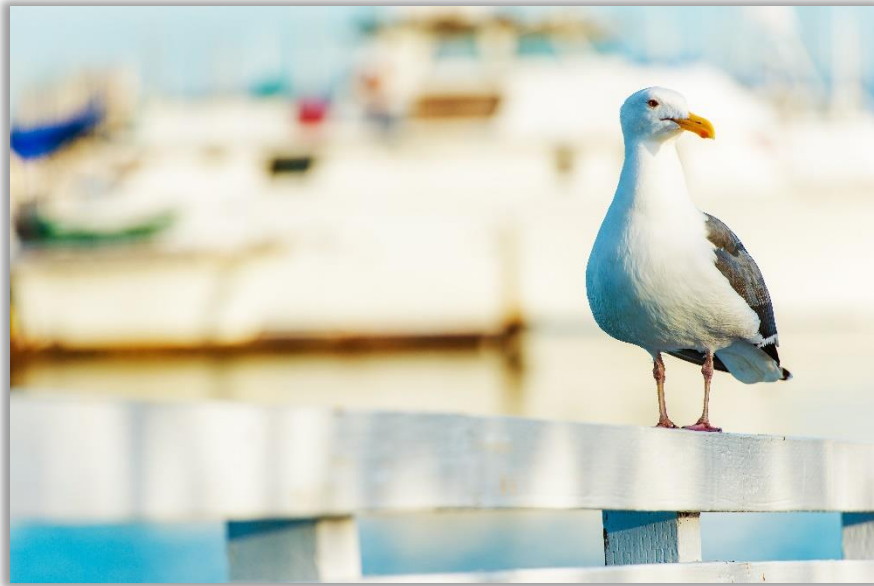


Naples Beach & Blue Palms by Rodgers  
IC | R1562D & R1557D



Getaway II, III, & IV by Fagalde  
WAG | 2668816, 2668817, & 2668818





Seagull at Watch & Coming Ashore by Jardine  
ALSS | 242365906 & TAW | OJAR-3410



Sail Boat & Sailing Mobile  
ALIS | 144226352 (spcrp) & ALSS | 1213148950



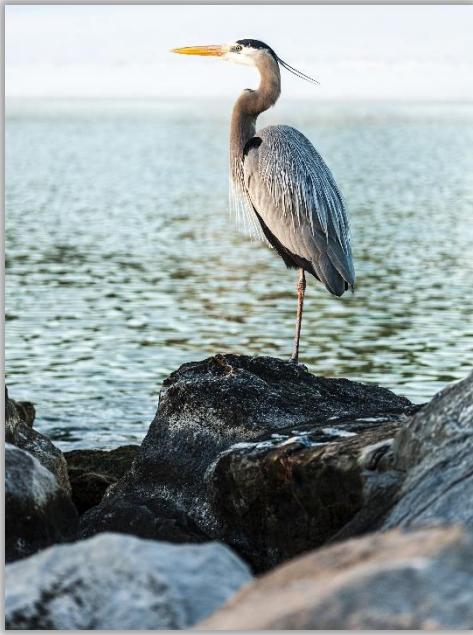


Under the Pier & Green Palm Leaves  
ALSS | 1298022022 & PI | HN120-A



Little Boat on the Shore II by Isabelle Z. & Pelicans in the Harbor  
PI | EZ885-A & ALSS | 1015271854





Grey Heron & Tree on the Shore  
ALSS | 137013050 & 1928735282



Watercolor Bay I by Scarvey & Grassy Marsh II by Goldberger  
WAG | 144633FN & 160475FN





Sunny Florida Home & Backyard Hammock  
ALSS | 646223983 & 635613605 (spcrp)



Ukulele Detail & UHAX-151\_ALT\_V4 by Haxton  
ALIS | 000017802185\_Double & TAW | UHAX-151\_ALT\_V4





Tropical Porch & Tree Tunnel with Spanish Moss  
SS | 1552260782 (spcrp) & ALSS | 248708416

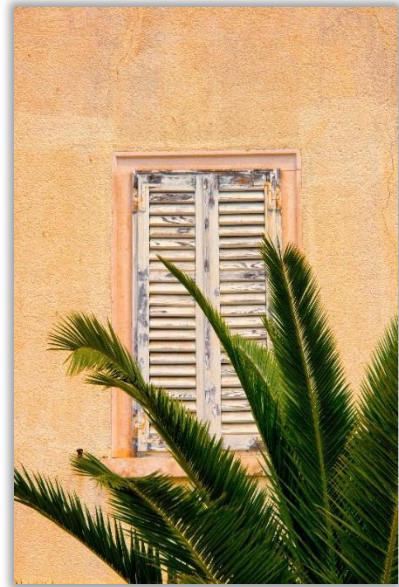
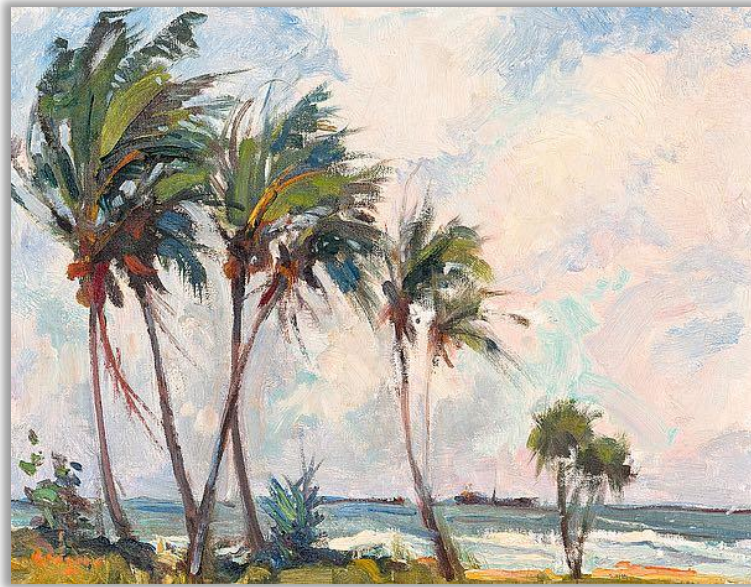


Happy Land by Reeves & Summer Botanics I by Watts  
PI | RF322-A & PI | EW560-A





Pathway to the Beach & Frangipani  
ALSS | 1334266487 & SS | 47936329



Six Palms by Rodgers & Orange Shutters  
IC | R1110D & ALIS | 144-Bright





Boats in the Canal & Color of the Thoughts  
ALSS | 346025099 & PI | RF272-A



Colorful Shell Detail & Walk on Shelly Beach by Penny  
AL-Florida | 218 & IC | P1203D





Sea Shell Crop & Sand Dollar by Jeanette Vertentes  
WA | 69366-A & 69365-A



Florida Pier & Boat Marina  
AL | Coastal 62 & ALSS | 492893





Ocala Natural Forest & Bicycle at Sunset  
ALSS | 1224830980 & 1159966525



Florida Lighthouse & Sunset Ocean Path  
ALSS | 122219692 & SS | 346234553





Iao Needle & Heliconia Pittosporum Flowers  
ALM | EJH793 & ALSS | 238420549 (special crop)



Macro Palms & Blue Butterfly  
ALSS | 1280349211 & ALIS | 000000503482





Tropical Composition I & II by Goldberger  
WAG | 163736FN & 163737FN



Sunny Bay by Vassileva  
WA | 64155-k





Pineapple Baby & Standing Surfboards  
SS | 1042492033 & ALM | ED1DHB

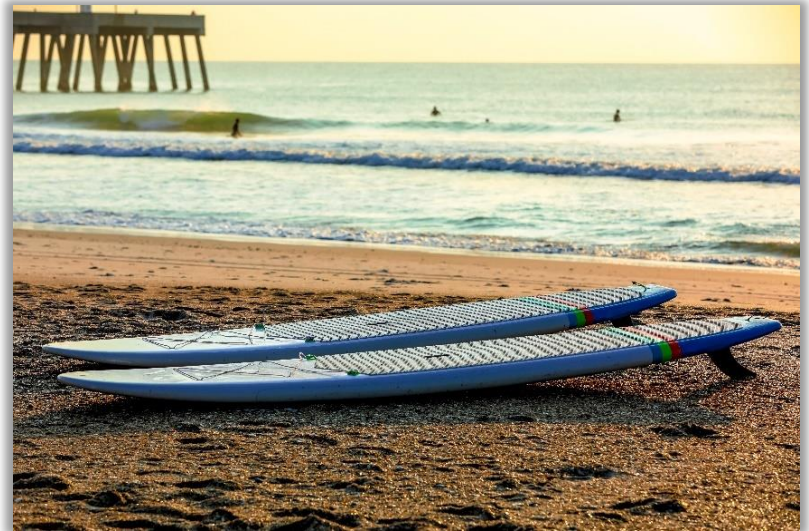


Coastal Cottage & Tropical Summer by Jensen  
ALSS | 600770615 & PI | JN441-A





Turtle & Big Beach  
ALSS | 410084182 & SS | 2087367667



Palm Trees & Surfboards  
ALSS | 1527578963 (Brighten) & 1521580076





Leaf Race & Smoldering Haze  
PI | EW307-A & EW308-A

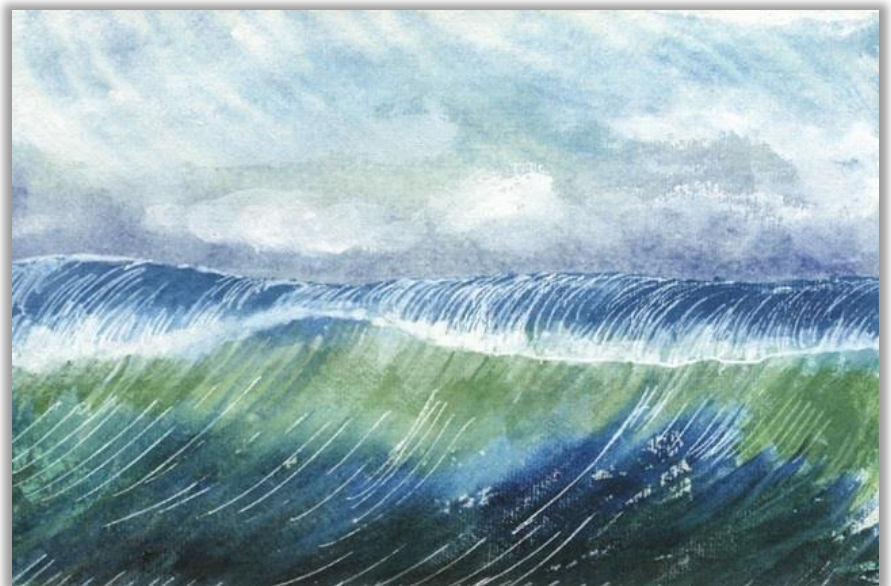


Bright Seaside Tranquility by Pepe  
PI | UP076-A





Green Hawaiian Mountains Oahu & Little Yellow Flowers  
SS | 1213087246 & ALIS | 471659891



Macro Palm Bark & Big Surf II by Ludwig  
ALIS | Botanical-Tropical-80 & WAG | 2719165





Green Palms, Tropical Orange Flower, Tropic Leaves & Little Flowers  
ALSS | 528989182, 718787338, 699421795 & 1263110431



Roots  
ALSS | 680997601



# Regional | Tropical

---



Floridian Porch & Pacific Cool IV Crop by Urquhart  
ALSS | 31294075 & WA | 25523-a

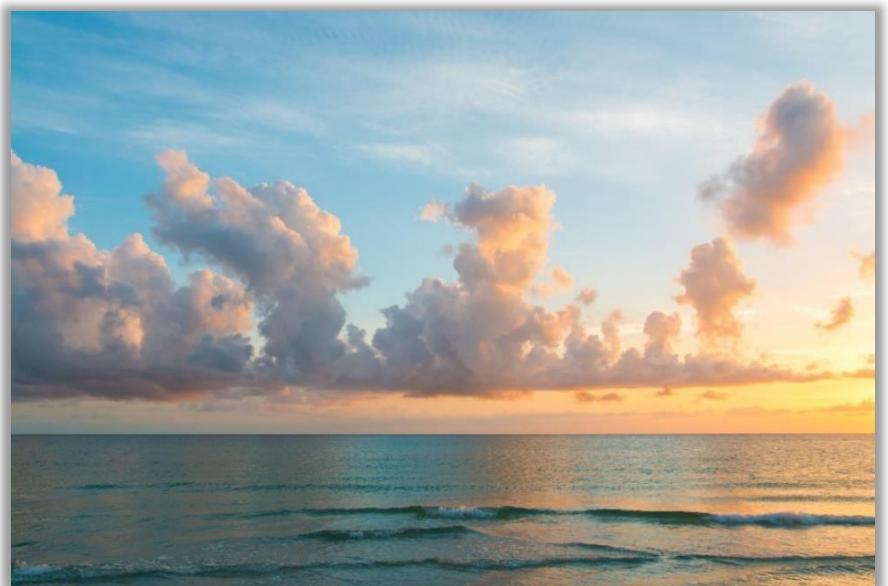


Peach Hibiscus & Exotic Beach by Ian C  
ALSS | 532905097 & PI | IN049-A





Colorful Shells & Sunset Palm by Gyneil  
ALSS | 459141244 & SEL | TR19811-PCN

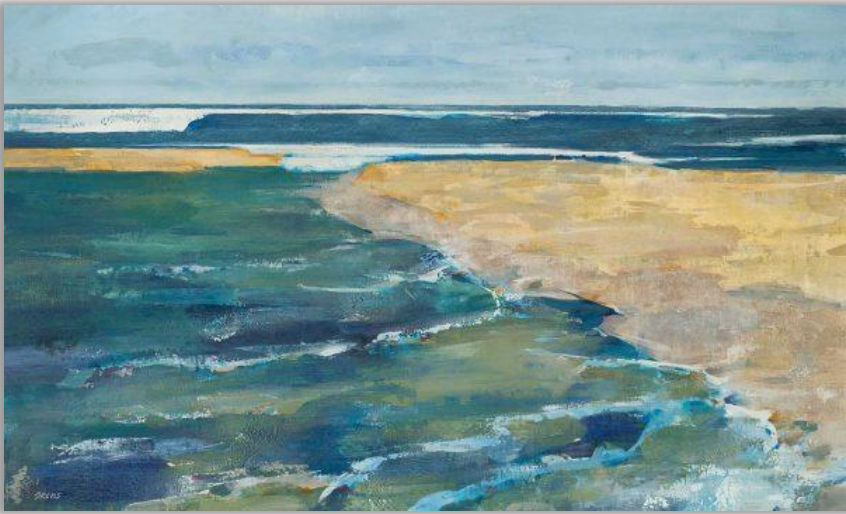


Floating Boats II by Pepe & Ocean Sunset  
PI | UP063-A & ALSS | 207454060





Manatees & Vanishing Point by Jardine  
ALM | 2E1A5NY & TAW | OJAR-3418



Golden Strand by Brems & Tropical Blue Waters  
TAW | UBRM-141 & SS | 1158463882





Seaglass Shadow II & I by Popp  
WAG | 2962345 & 2962344



Hawaiian Breeze I by Isabelle Z.  
PI | EZ754-A





Shell Detail & Pensacola Boardwalk  
ALIS | 636790928 & ALSS | 179319434



Fronde I, Soft Palm I, & Fronde II by Mann  
TAW | UMAN-118, UMAN-120, & UMAN-112





Coastal View & Lifeguard Tower  
ALSS | 361539299 & 276916



Shell in the Sand & Happy Crab  
ALSS | 99049292 & 148437368





Marseille Boats I by Silver & Water Way by Camps  
PI | RX024-A & CAP | POD61016



Shell Details & Florida Pier Sunset  
ALSS | 1059356138 & 560982817





Great Blue Heron Gaze by Watts & Shell Beach  
PI | EW544-A & ALSS | 378516403 (spcrp)



Sunset Dock & Ocean Overture by McMurry  
SS | 1037661607 & CAP | POD5087





Modern Tropic Leaf I, II, & III by Watts  
PI | EW910-A, EW911-A, & EW912-A



Sea Turtle I & II by McCavitt  
WAG | 2676865 & 2676866



# Regional | Tropical

---



Beach Chairs & Tampa Palms  
ALIS | 168490553 & ALSS | 1103453639



Rocks on Wood Post & Sandy Dunes  
ALSS | 91719791 & ALIS | 73 (12)





Beach Florals & Beach Surf III by Fields  
ALSS | 1184169976 & WAG | 114356FN



Sunrise at the Beach & Tropical White Flower  
ALSS | 715260826 & ALIS | 68748247\_LARGE





Lifeguard Station with Bicycle, Florida Brown Pelican, & Surf Boards  
ALIS | States-FL73(4), ALSS | 804811, & 285952430



Colorful Florida Houses & Buoys  
ALIS | 172467705 & ALSS | 668308108





Vivid Birds of Paradise I & II  
WAG | 2667197 & 2667198

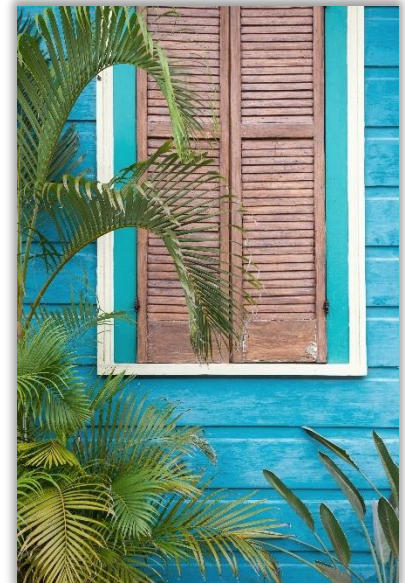


Busy Beach  
ALSS | 1170224731 (Left & Right Crop)





Beach Biking & On the Coast  
SS | 1094944256 & AL | 15



Lifeguard Shack & Blue House with Shutters  
ALSS | 346234505 & ALIS | 143



# Regional | Tropical

---



Palm House I, IV, & III by Wang  
WAG | 2962955, 2962958, & 2962957



Crystal Coast by Ilosky  
WAG | 2701547





Flamingo, Florida Gardens  
ALSS | 542196205 & 297875993



Colorful Shells & Aquarium Fish IV by Zarris  
ALSS | 184783814 & WAG | 2652593





Ocean Sunset & Oahu Sunrise  
ALSS | 314299406 & 1202144314

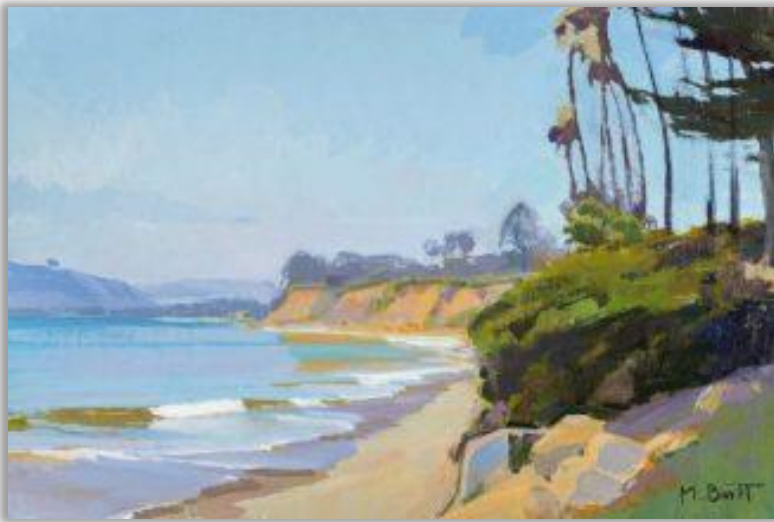


Palms at Sunset & Colorful Seashells  
ALSS | 593426543 & SS | 204022516





Tropical River Lagoon & Palm Abstract by Hristova  
ALSS | 275123201 & WA | 54808-E



Midday by Marcia Burt & Colorful Beach Signs  
IC | B4083D & ALSS | 1150140122



# Regional | Tropical

---



Maui North Coast & Historic Lighthouse of Oahu  
SS | 650607931 & 1608610585



Sunny Day IV by Jardine & Shell Collection  
TAW | OJAR-293 & AL-Tropical | 73 (21)





Watercolor Sea Turtle Study by Vess  
WAG | 162569Z & 162570Z



Beach Grasses, Pelican, & Sunset Palm  
ALSS | 361539095, 53229595, & 364747151

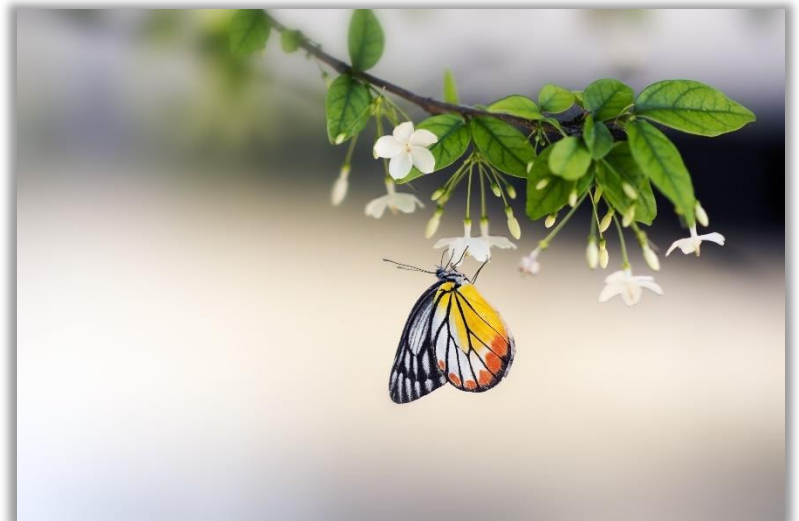


# Regional | Tropical

---

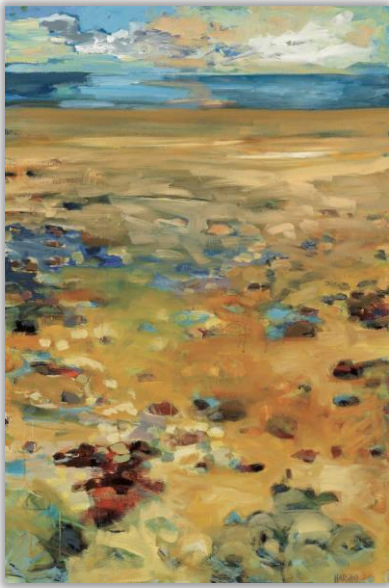


Three Wooden Tikis in Oahu & Hawaii Waterfall  
SS | 171511067 & 636669313

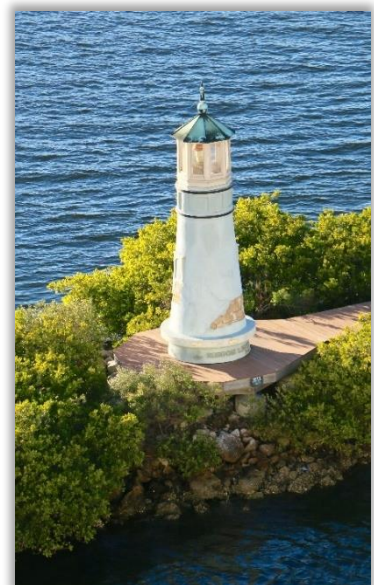
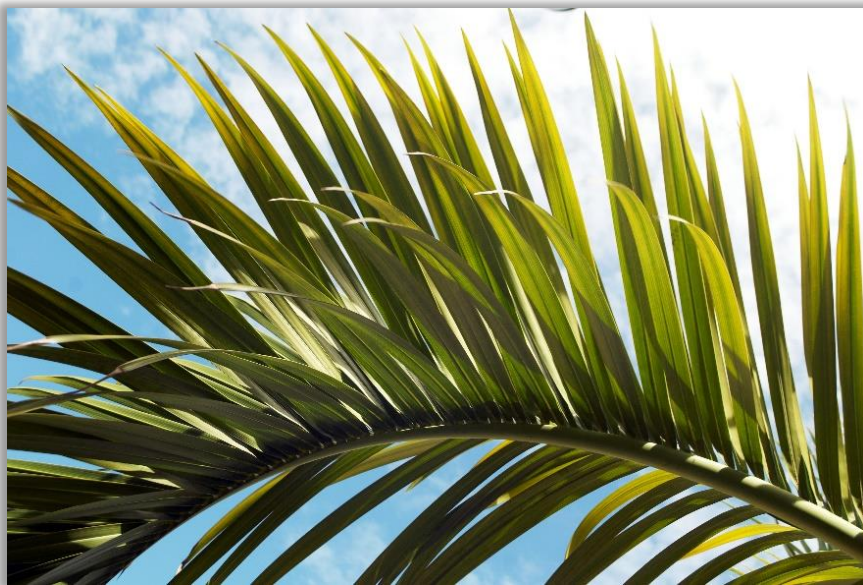


Florida Magnolia & Hanging Out  
SS | 2153608081 & ALSS | 587841329





High Point of Summer by Harwood & Ocean View Beach Path  
CAP | HJP123 & SS | 1398275867



Green Palm & Florida Lighthouse  
ALSS | 193924256 & 1634704645 (spcrp)





Harbor Boats & Boat Ropes  
ALSS | 12549199 & ALIS | 000043495160



Sunny Beach Path & Key West Shells by Vertentes  
ALSS | 182421812 & WA | 55495-a



# Regional | Tropical

---

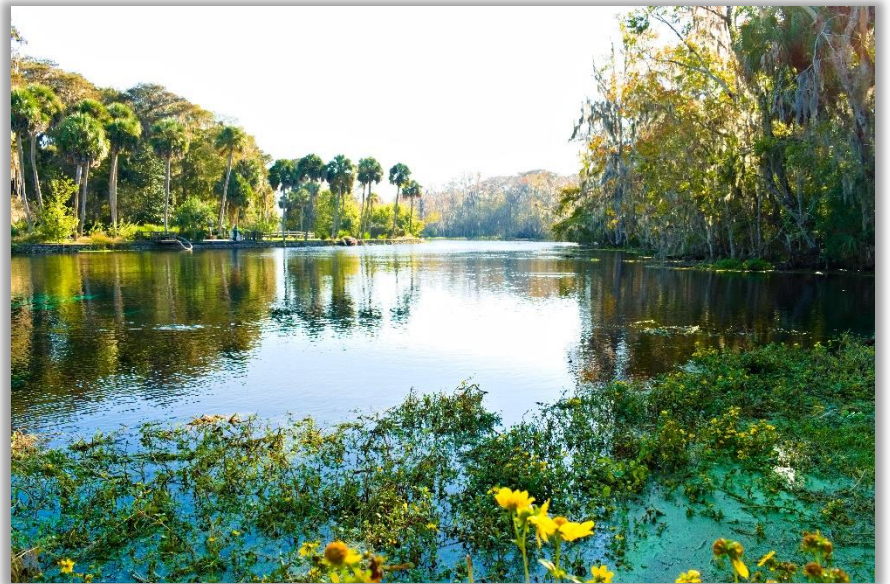


Currents by Hristova & Blue Starfish  
WA | 28627-I & ALSS | 101858272



Pier Pilings & Golden Shores  
ALSS | 1446725315 & 360631166





Tropical IV by Meagher & Florida Lagoon  
WAG | 2685194 & ALSS | 1407954056



Palms and Boat Aerial & Technicolor Jungle I by Scarvey  
ALSS | 1639348900 & WAG | 2667178





Twin Starfish I, II, & III by Ludwig  
WAG | 2665039, 2665040, 2665041

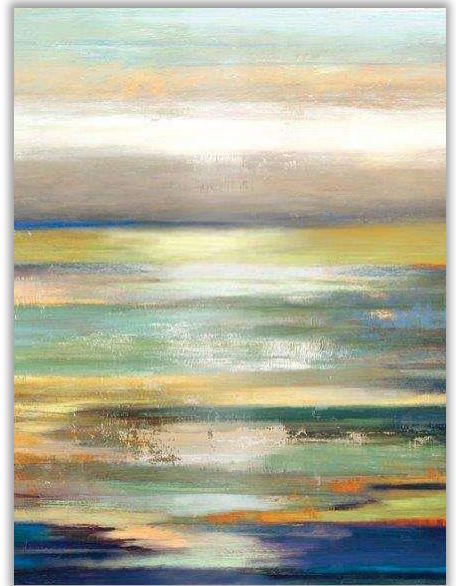
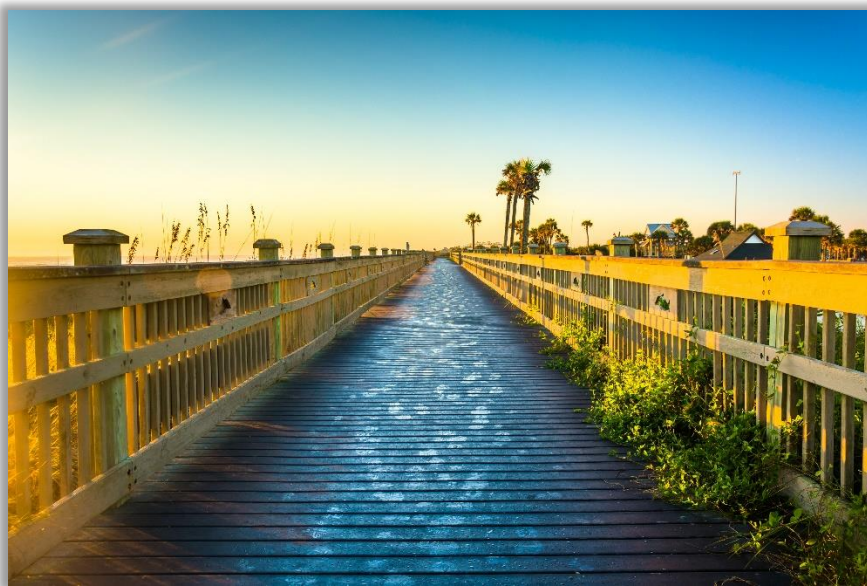


Bula Bula I & II by Wilkins  
WAG | 2701166 & 2701167





Vintage Wheels & A Day in the Sun  
ALSS | 1045180588 & TAW | OJAR-3532



Beach Boardwalk & Evening Tide by Reeves  
SS | 231797467 & PI | REV76





Pebble Valley I & II by Vess  
WAG | 2683794 & 2683795



Feathery Clouds with Palms & Path Through the Dunes  
ALSS | 614219888 & 139963726



# Regional | Tropical

---



Tropical Impression I & II by Warren & Serenity in St George by Mertz  
WAG | 2739555 & 2739556 & IC | M1493D



Colorful Beach Bicycles & Tropical Palm Tree  
ALSS | 1201065154 & SS | 1364539379





Colorful Buoys & Binoculars  
ALIS | 184296622 & ALIS | 153496123



Sea Urchins & Waiting for Sunset  
ALSS | 63962731 & SS | 615264635





Paradise Coast by Brems & Lifeguard Station  
TAW | UBRM-169 & ALIS | 545249928

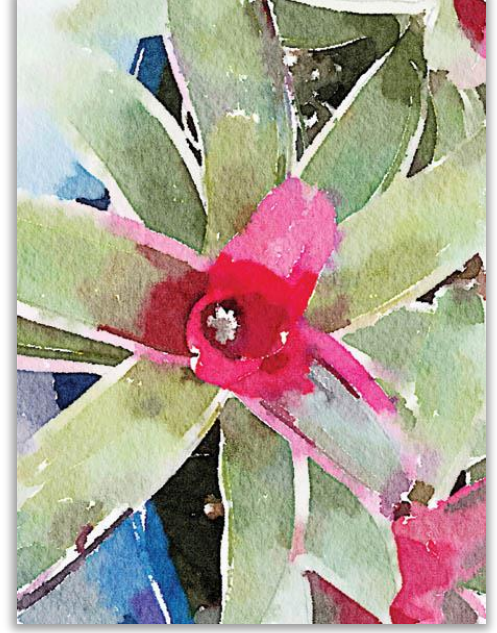
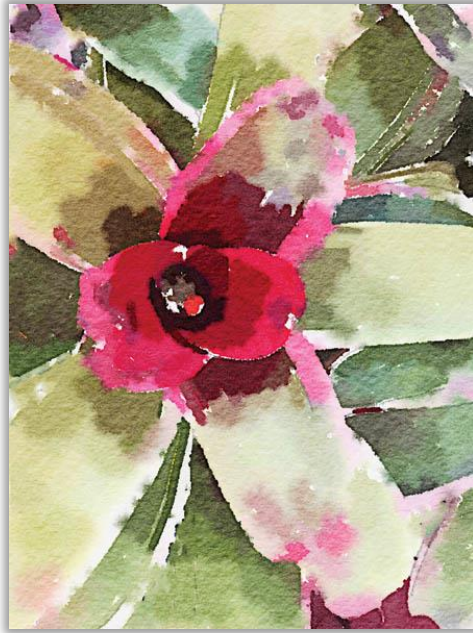
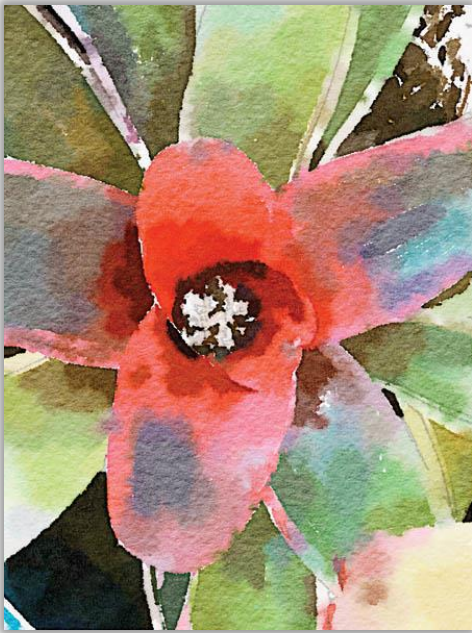


Pretty in Pink No. 2 by Koelman & Colored Grasses Panel  
IC | K2580D & SEL | TR43961 (spcrp)



# Regional | Tropical

---



Tropical Garden I, II, & III by Orlov  
PI | OR317-A, OR318-A, & OR319-A



Palm & Dune by Railsback  
IC | R1483D & R1481D



# Regional | Tropical

---



Beach Time & White Orchids  
CAP | POD60674 & ALSS | 2269892527

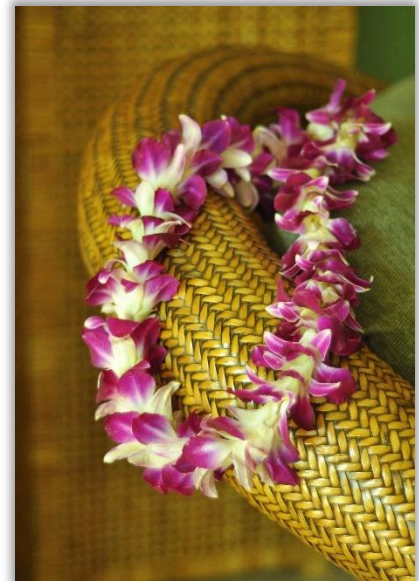


Bike on the Shore & Colorful Palm  
ALSS | 447238495 & 552419902





Red Ginger Hawaii & Garden of Eden  
ALSS | 97465796 & 105896264



Hawaiian Surfboards & Hawaiian Lei  
ALSS | 128940647 & 115433002





Tessellation I, III, & II by Wilson  
PI | WL248-A, WL250-A, WL249-A

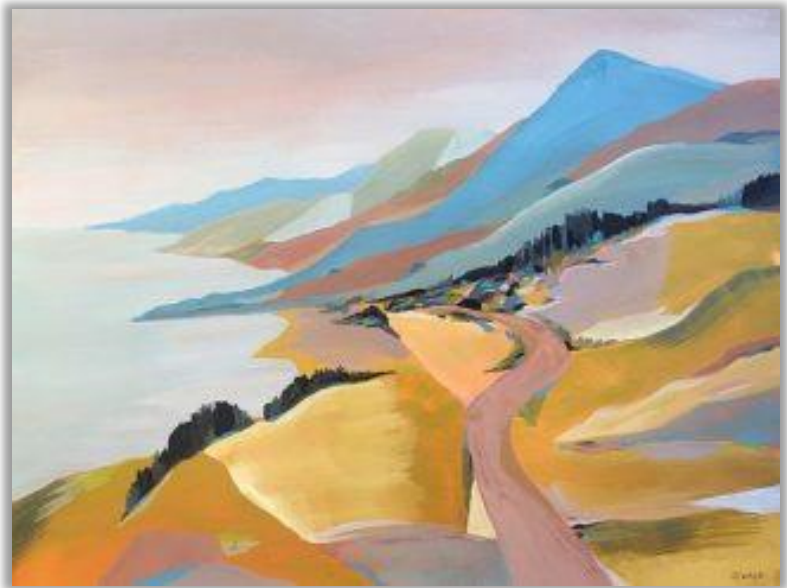


Beach Surf II by Fields  
WAG | 114355FN





Tangerine Blossoms I by Wang & Coastal Paradise Found by Riger  
WAG | 2721019 & 2831052



Pastel Fan 4 by Ian Winstanely & Monterey to The Sea by Pete Oswald  
IC | W1186D & O311D